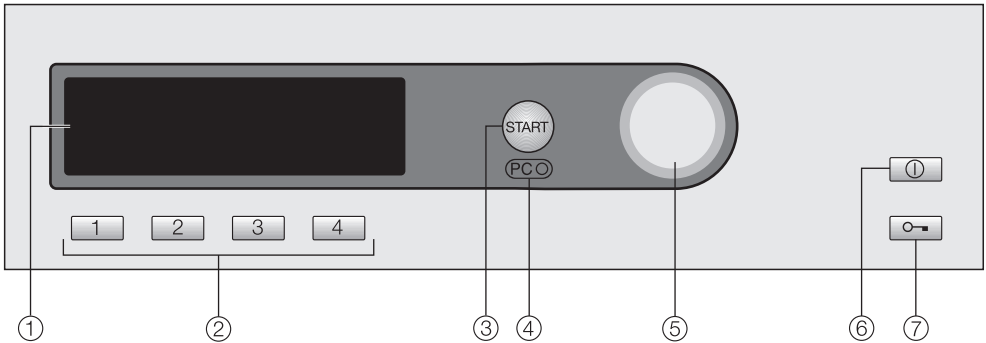


User manual

Dryer machine

cove

Control panel



① Display

After the machine has been switched on, the display lights up.

As soon as the dryer is ready to use, the Main menu appears in the display.

② Direct select buttons

For selecting an individual drying program quickly. These buttons can be programmed to select your own favorite drying programs.

③ Start button

The indicator light flashes when a program can be started and lights up when the program starts.

④ PC/Optical interface

This is used by Miele service technicians during servicing work for testing purposes.

⑤ Multi-function selector

This is used to select menu options (by turning it) and to confirm your selection (by pressing it).

⑥ On/Off button ①

For switching the dryer on and off.

To save energy the dryer will switch off automatically 15 minutes after the end of the program/anti-crease phase or 15 minutes after the dryer is switched on if no other selection is made.

⑦ button

Opens the machine door independently of the electrical supply.

Before using for the first time

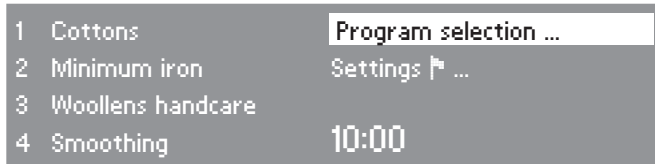
Before using the machine for the first time, ensure that it is correctly installed and connected. See "Installation".

Commission the machine as described in the separate booklet "Commissioning, Program chart and Settings" supplied with the machine.

Operating the dryer

Display

Main menu



When the dryer is switched on, the Main menu (with four favorite programs listed) appears with *Program selection* highlighted.

Multi-function selector

Turning the multi-function selector moves the highlighting to the next option.

Pressing the multi-function selector selects the highlighted option.

Direct select buttons

Pressing a direct select button will select one of the four favorite programs shown on the left of the display.

If you wish to change the programs shown in this list you can do so (see "Selecting a program - Saving a favorite program" for more information).

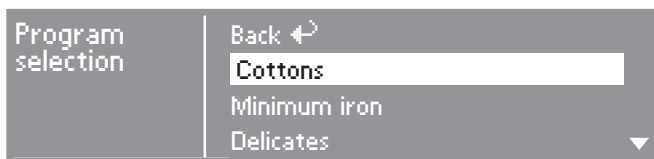
The direct select buttons have different functions in the other menus. Where this is the case, an arrow ▼ will appear in the display above the direct select buttons, together with a description of its function .

program selection

There are two ways of selecting a program:

- Option 1: Select the *Program selection* menu in the display and confirm your selection by pressing the multi-function selector.
- Option 2: Press direct select buttons or . This will automatically take you into the main menu for that program.

program selection menu

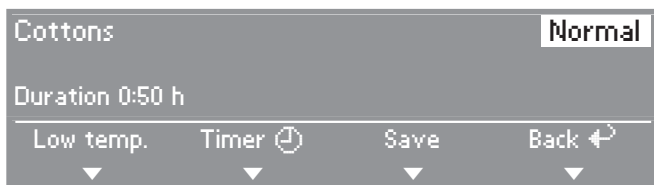


You can use the multi-function selector to select any program. The highlighting will move up or down depending on the direction the multi-function selector is turned in.

The ▼▲ arrows on the right of the display, indicate further options.

Pressing the multi-function selector takes you to the main menu of the program selected.


Drying program main menu



- Turn the multi-function selector to highlight either the "Drying level" or the "program".
 - Pressing the multi-function selector selects the highlighted option and opens the relevant sub-menu.
 - *Low temperature* and *Timer* can be selected by pressing direct select buttons 1 or 2.
 - To go back to the Main menu press direct select button 4.

Alternatively, you can also highlight and confirm all options by just using the multi-function selector.

Settings menu

The *Settings* menu  is used to alter the tumble dryer's electronics to suit different requirements. See the separate booklet "Commissioning, Program chart and Settings" for further information.

Operating the dryer

Operating the tumble dryer in Laundromat mode

The Main menu will vary depending on the *Controls* setting selected.

- The dryer is operated either with direct select buttons 1, 2, 3, 4 or the multi-function selector.

WS-direct select buttons, basic

1	Cottons	Normal+
2	Minimum iron	Normal
3	Woollens handcare	
4	Cool air	

4 programs are available to choose from. To specify which programs are available go to the *Settings/supervisor level* menu.

WS-direct select buttons + Logo




12 drying levels and timed programs are available to choose from. To specify which programs are available go to the *Settings/supervisor level* menu.

WS-direct select buttons, ex/int time

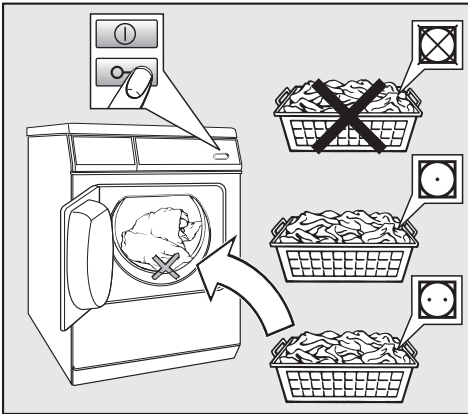


4 timed programs with different temperature levels are available to choose from. To specify which programs are available, go to the *Settings/supervisor level* menu.

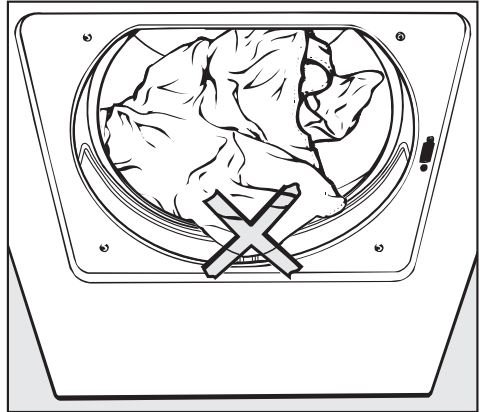
1 Sort the laundry


 It is very important to read the "Notes and tips on laundry care" section before proceeding.

2 Load the dryer



- Open the door.
- Load the drum.




 To avoid damaging your laundry, when shutting the door check that no items of laundry have become trapped in the door opening.

- Shut the door either with a gentle swing, or lean against it and push it shut.

Short instructions

3 Select a program

- Switch the dryer on by pressing the *On/Off*  button.

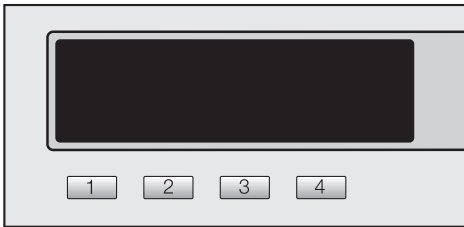
Please note:

- If no further selection is made within 15 minutes, the dryer will switch off automatically.
- This does not apply to machines with a payment system.

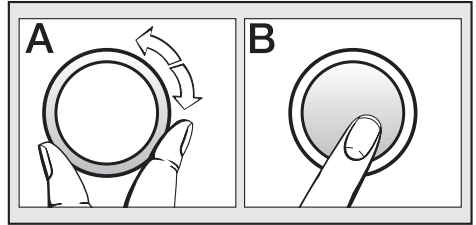
Program chart

- See separate booklet "Commissioning, Program chart and Settings".

You can select a program either by:



1. Using the appropriate direct select button to select one of the four programs listed in the display ("Favorites"), or



2. Selecting a program from the *Program selection* menu (turn **A** and press **B**).

Select *Low temperature* or *Timer*, if required

- Select *Low temperature* and/or the *Timer* (Delay start time) from the relevant sub-menu.

Coin operation/payment system

If your machine is connected to a payment system, the amount of payment required will appear in the display.

Opening the door or cancelling the program after it has started may cause a loss of credit (depending on how the tumble dryer was set up).

4 Start the program

The *Start* button will flash as soon as a program can be started.

- Press the *Start* button.

The *Start* button will now light up.

- *Prog. running* will appear in the display, followed by *Drying* and the program duration.
- With sensor drying programs, e.g. *Machine iron ... Hand iron* etc., the drying level reached will be shown in the display later on.

Once drying is in progress, you can press one of the direct select buttons:

- Button [2] *Timer* to call up the estimated end time of the program and the current time of day.
- Button [3] *Save* to save the current program as a favorite.
- Button [4] *Cancel* to cancel the current program.
This only applies to machines with a payment system, if a program can be cancelled without the loss of credit.

See section "Changing the program sequence" for further information about the following:

- Payment system
- Changing a program once it has started
- Cancelling the current program
- Adding or removing laundry after a program has started
- Interruption to the power supply
- Time remaining

program duration/Estimated time remaining

When a program is selected, the estimated duration will appear in the display. Please be aware that it is only an estimate!

The following factors all affect the estimated time remaining: residual moisture content after spinning; type of fabric; size of load; room temperature; fluctuations in power supply.

The electronics assess conditions in the dryer and adjust the estimated time remaining for a more accurate reading. Because of this, the time displayed can alter during the course of a program.

Before the end of a program

In many programs the heating phase is followed by the cooling down phase: *Cooling down* will appear in the display. The program is not finished until the cooling down phase has been completed.

Do not switch the tumble dryer off before the end of the drying program.

Short instructions

5 Remove the laundry when the program has finished

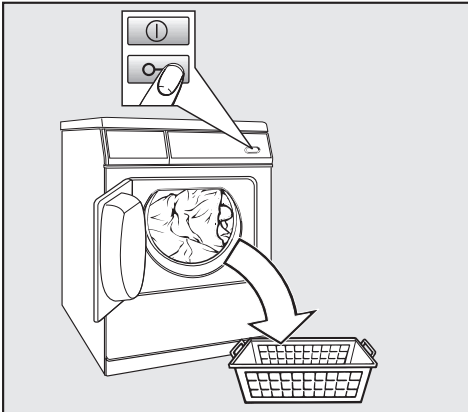
Anti-crease (if selected) and *End* will appear in the display to indicate that the program has finished.

Please note:

- To avoid creasing, during the anti-crease phase the drum will continue to turn at intervals until the laundry is removed.
- The dryer will switch off automatically 15 minutes after the end of a program/the end of the anti-crease phase.

It is advisable to remove laundry as soon as the program has finished.

- Open the door.



- Remove everything from the drum.

Check that all items have been removed from the drum. Anything left in the dryer could be damaged by overdrying when it is next used.

The drum lighting will come on when the door is opened. It will go out a few minutes later to save energy.

- Switch the dryer off by pressing the *On/Off* ⓪ button.

The display will go out.

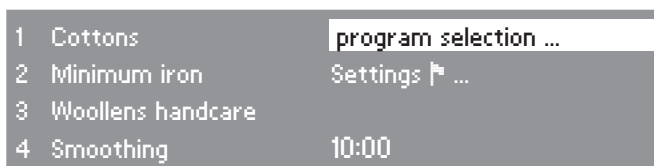
- Close the door.

Maintenance after each drying program

- Please see "Cleaning and care" for details.

Selecting/changing a program

Main menu



- Press shortcut button 1.

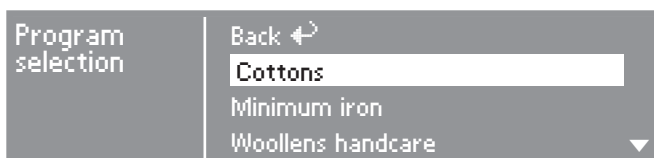
Main menu



- By turning the multi-function selector you can then highlight the following options in the display: Program (*Cottons*) or the drying level (*Normal*), and confirm your selection by pressing the multi-function selector.

Depending on the option highlighted, the following will be displayed:

– program selection

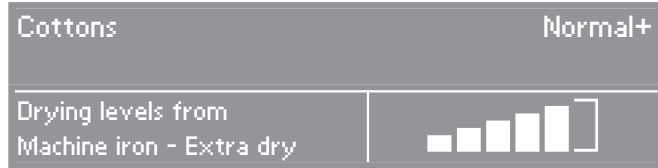


- Use the multi-function selector to select the program you want, and confirm your selection. The main menu will reappear.

Selecting a program

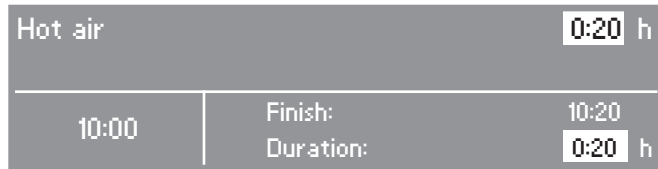
Note: If you do not make a selection in the sub-menu within approx. 20 seconds, the display will revert to the main menu.

– programs with drying levels



- Use the multi-function selector to select the drying level you want, and confirm your selection.
- The display will show which drying levels can be selected for each individual program.

– programs where the time can be altered



- You can increase or decrease the duration of the program* using the multi-function selector.


The program end time for the duration selected will also appear.

* If the tumble dryer has a payment system, the maximum duration for a program is set during the commissioning process under the controls option *WS-direct select buttons, ex time/int time*.

– Other programs

You cannot alter the drying level or duration for the other programs.

Low temperature

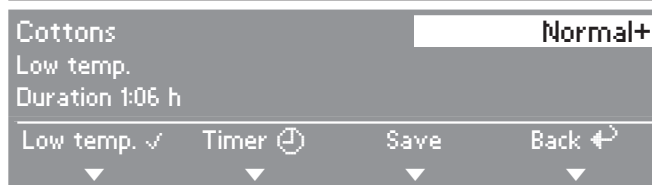
Select *Low temperature* for all delicate or minimum iron fabrics with the  care label (e.g. acrylic garments).

- Delicate fabrics are dried at a lower temperature.
- The program duration is longer.

■ Press shortcut button  *Low temp.*

Saving a favorite program

You can program the direct select buttons to call up the four most frequently used drying programs. The *Save* option must be activated via the *Settings/Supervisor level* menu before the direct select buttons can be programmed.



■ Press direct select button  *Save*.

Selecting a shortcut button



■ Use the multi-function selector to select the number you want to save the program to, and confirm your selection. Your settings have now been saved and the favorite program will appear in the Main menu.

Repeat the procedure if you want to customize other favorite programs, and save them to short cut buttons which have not yet been used.

Timer

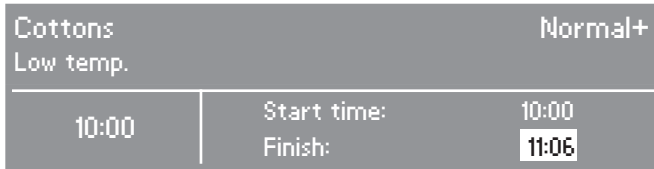
Depending on the *Delay start* setting, you can use the Timer to set the time you wish a program to finish or start at, or you can delay the start of the program.

To open the Timer sub-menu



- Use direct select button **[2]** *Timer* to open the *Timer* sub-menu.

To select a delay start time



- Select the time required (in 30 minute steps) using the multi-function selector, and confirm.

The start and finish times will now be postponed by the time inputted. The maximum time that an automatic program start can be delayed by is 24 hours.

To start the timer

- Press the *Start* button.

The timer will count down in minutes until the start of the program. If the delay start time selected is more than one hour, the drum will turn briefly every hour to prevent creasing.

To cancel the timer

- Press direct select button **[4]** *Cancel*.
- The program can now be started.